



DATASHEET

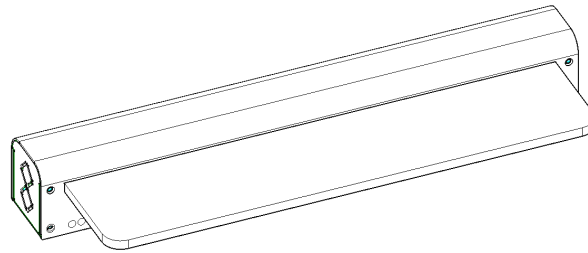
LMPSH-IP

Professional RGB Studio Signal Lamp
rev. 1.2

www.xichtee.com
office@xichtee.com
Company ID: 56695284
Tax ID / VAT: 2122403635

LMPSH-IP

Professional RGB Studio Signal Lamp



Overview

The LMPSH-IP is a fully integrated PoE-powered OnAir lamp designed for professional broadcast, production, and studio environments. It features a built-in addressable LED strip and an engraved plexiglass illumination panel, available in **single-panel or dual-panel** configurations.

The device operates entirely over IP and requires **no GPIO, no local power supplies**, and no additional drivers. A single Ethernet cable provides both power and signaling.

Key Features

- Built-in engraved plexi panel
- Single-panel or dual-panel version
- Individually illuminated sections based on TSL IDs
- Full IP implementation — no GPIO wiring required
- PoE-powered operation (IEEE 802.3at)
- Built-in addressable LED lighting
- Per-segment TSL ID assignment for multi-zone color control
- **TSL 3.1 + OSC protocol support**
- Integrated WebGUI for configuration
- Up to 8 simultaneous active connections (TSL + OSC + WebGUI)
- Planned REST API for future integration
- Professional broadcast-grade construction
- **2-year warranty**

Advanced Features

Advanced Addressable LED System

The LMP SH-IP contains a built-in programmable LED bar behind the engraved plexi glass.

Single-Panel Operation

- Illuminates a single engraved plexi sheet (e.g., “ON AIR”).
- Entire LED strip behaves as one segment.
- Controlled by a single TSL ID (ID0 by default).

Dual-Panel Operation

The plexi glass can be manufactured as two separate illuminated sections:

- Section A: left engraving (e.g., ON AIR)
- Section B: right engraving (e.g., REC)

Each section:

- is internally mapped to a specific LED range
- receives its own TSL ID
- can display different colors

LED Segmentation

- Built-in LED bar supports segmentation by TSL ID
- TSL IDs available: ID0–ID126
- ID0 = global override (controls all LEDs)
- Perfect for multi-message signage or multi-state tally behavior



Protocol Support

TSL 3.1 – TCP

- Full compatibility with the broadcast-standard tally protocol
- Color bits: Bit0–Bit3
- User-selectable color priority: Bit0 or Bit3
- Supports four brightness levels from protocol

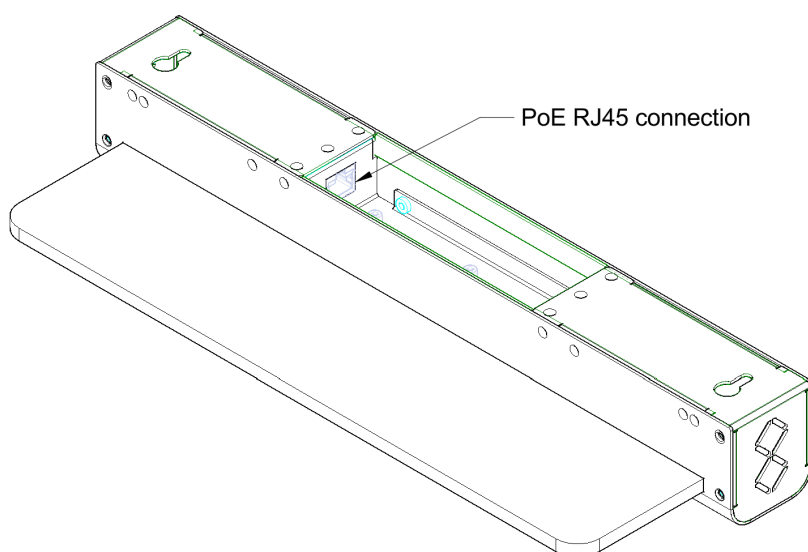
OSC – UDP

- Supports integer and float values
- Up to 5 programmable OSC rule entries

Planned Protocol – REST API

Hardware

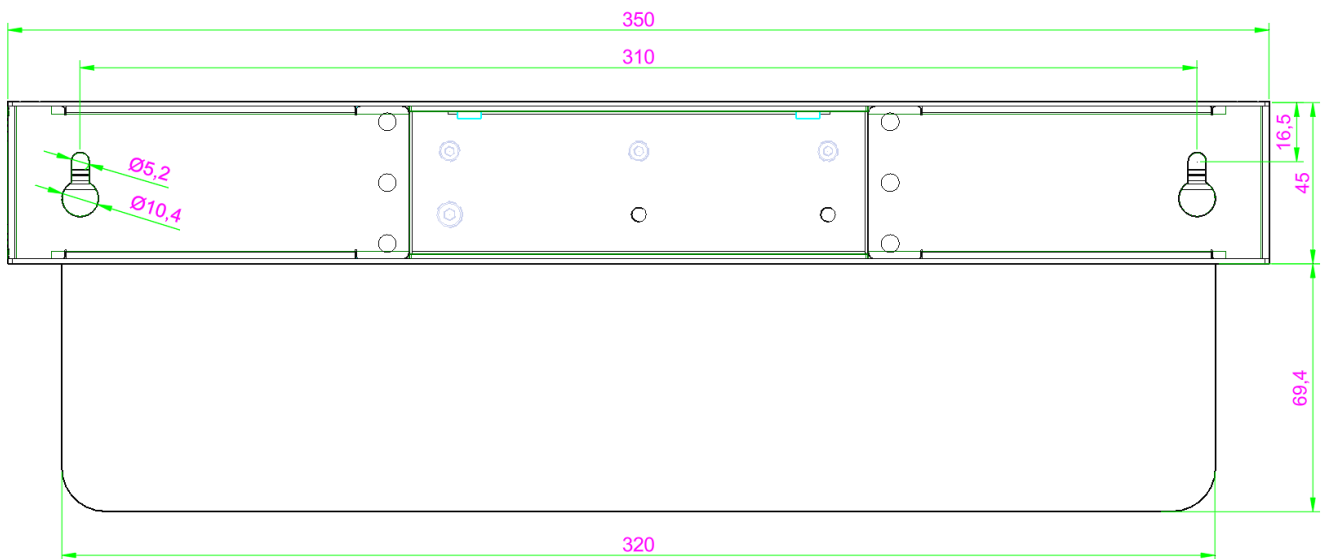
- Power: PoE (IEEE802.3at Class 4).



Mechanical

- Dimensions 350mm, 115mm (incl. plexi glass), 50mm

Rear View



Support

For additional assistance, contact the LMP SH-IP support team at office@xichtee.com.